

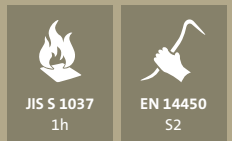


**CERTIFIED PROTECTION**  
AGAINST THEFT AND  
FIRE, IDEAL FOR SMALL  
BUSINESSES AND  
HOMES



# MINI BANKER MK II

## BURGLARY & FIRE-RESISTANT PROTECTION

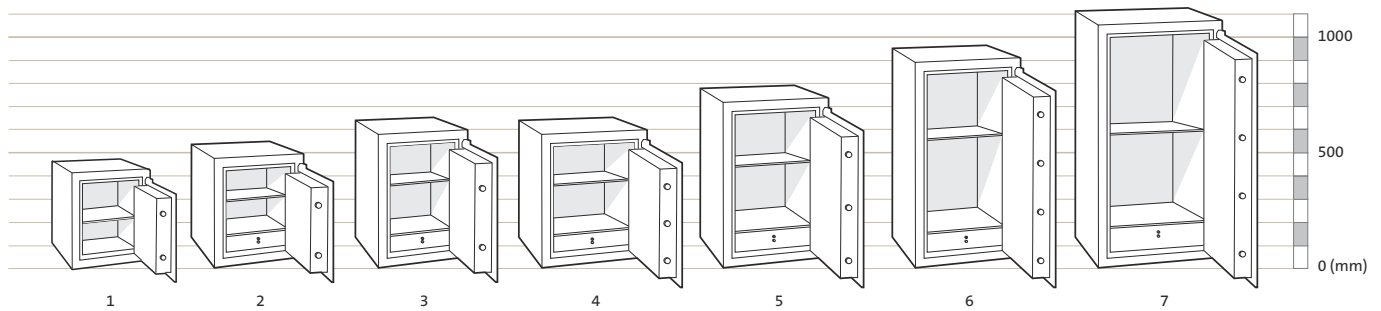


### KEY FEATURES

- Body barrier thickness of 65mm; constructed from steel, welded throughout and filled with specially formulated Chubb Safes barrier material.
- A solid composite 35mm thick door is combined with additional protection plates for crucial locking areas.
- Solid steel moving bolts with a 28.5mm diameter affix the door to the body, while fixed “anti-heeling” bolts on both front and rear edges protect the door from prying attack.
- Glass relocker to ensure bolts to remain firmly in place should an attack on the lock occur (featured on model 2 and above).
- A Polyurethane base paint finish is used to coat the body and door. The paint is both scratch resistant and durable
- Tested in accordance with EN 14450 Level S2, certified by ECB•S.
- Fire Resistance tested in accordance to the Japanese Industrial Standard JIS S 1037 with fire resistance for up to 60 minutes.

# MINI BANKER MK II

## PRODUCT SPECIFICATIONS



Model	External Height (mm)	External Width (mm)	External Depth* (mm)	Internal Height (mm)	Internal Width (mm)	Internal Depth (mm)	Capacity (litres)	Net Weight** (kg)	No. of Shelves	No. of Drawers
1	410	360	386	280	230	205	13	104	1	0
2	488	435	461	358	305	280	31	157	1	1
3	590	435	461	460	305	280	39	180	1	1
4	590	550	576	460	420	395	76	257	1	1
5	717	550	576	587	420	395	97	293	1	1
6	894	550	576	764	420	395	127	347	1	1
7	1047	640	666	917	510	485	227	481	1	1

\* Handle projection is 56mm. \*\* In line with certification, weights can vary by +/- 5%

### LOCK OPTIONS

As the standard locking option, all models of Mini Banker Mk II are fitted with a key lock and a combination lock.

#### KEY LOCK

Secured by eight-lever double-bitted, non-key retaining key lock.

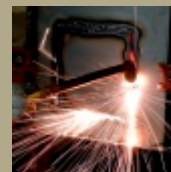
#### COMBINATION LOCK

Listed under UL Group 2, VdS class 2, CEN B, A2P B. Gain enhanced control via the Sargent & Greenleaf certified three-wheel combination lock.

#### ELECTRONIC LOCK

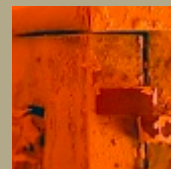
A variety of high security certified electronic locks can be fitted on request.

### TESTING



#### BURGLARY

Certified by ECB•S in accordance with the European standard, EN 14450, for burglary protection in S2.



#### FIRE

Fire Resistance tested in accordance to the Japanese Industrial Standard JIS S 1037 with fire resistance for up to 60 minutes.

Available From :



**ABATE  
SAFE CO.**

1800 01 91 71 sales@abatesafe.com.au  
www.abatesafe.com.au

www.chubbsafes.com

BY **GUNNEBO**®

**Chubbsafes**  
Trusted the world over.